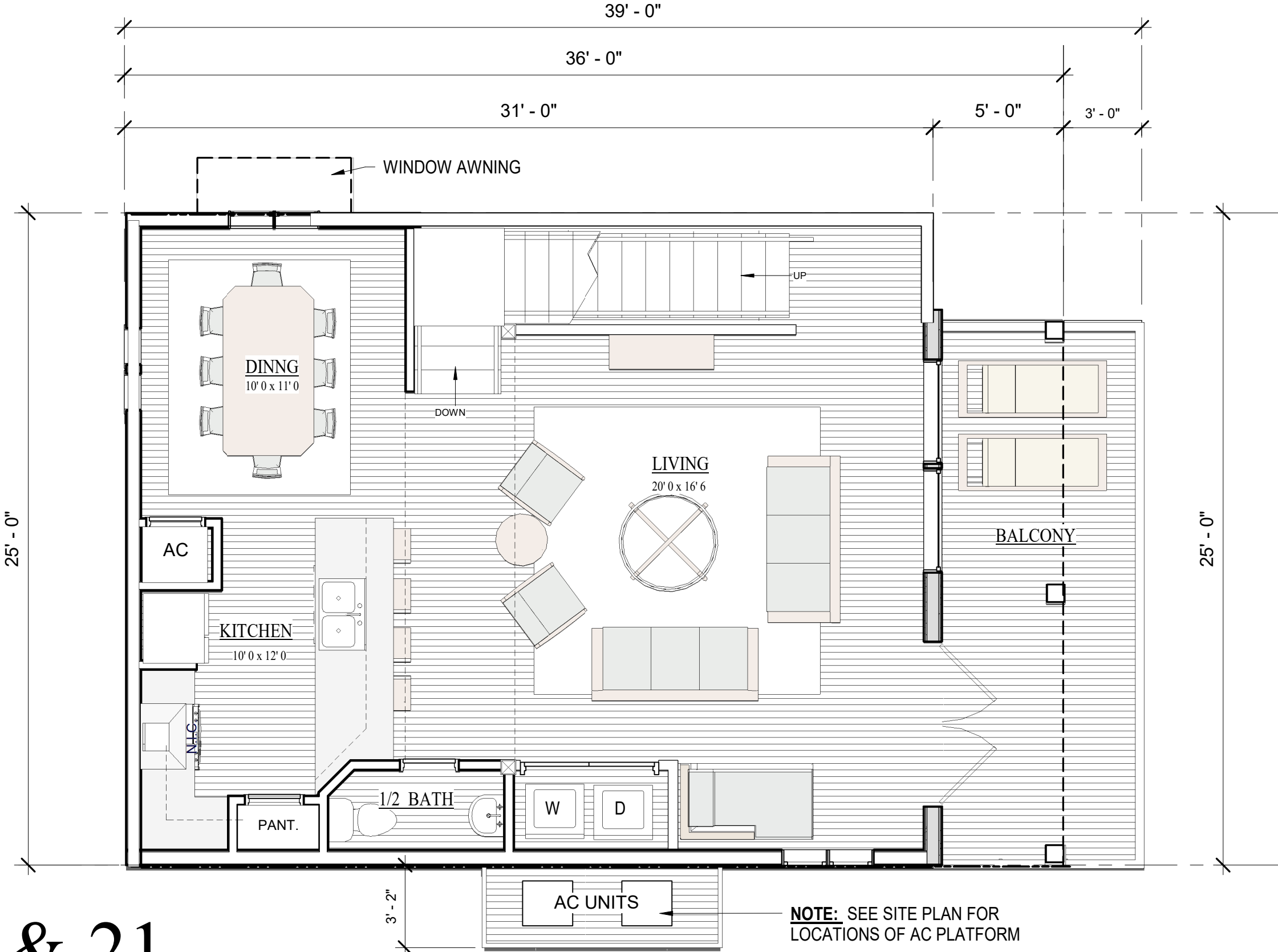
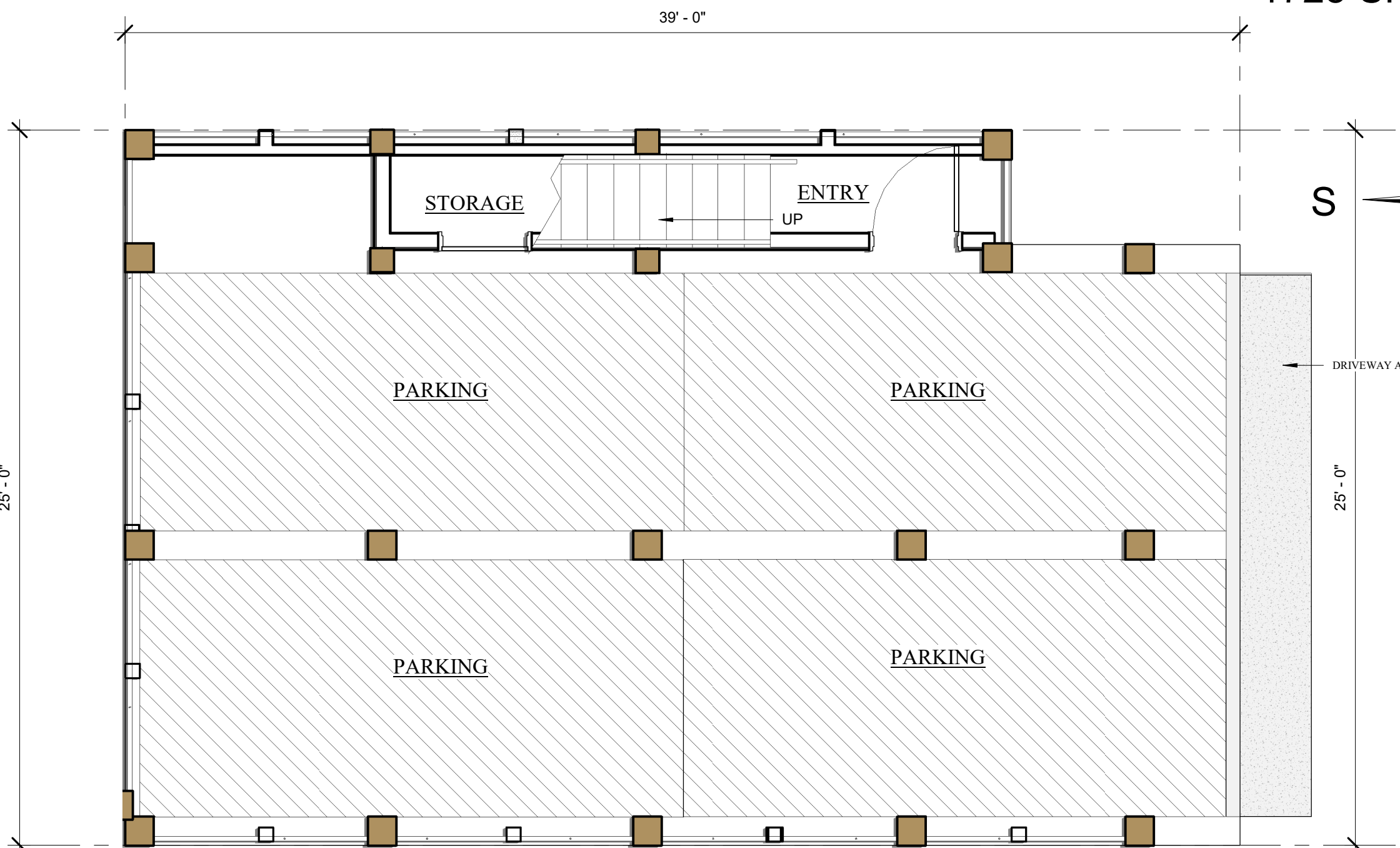


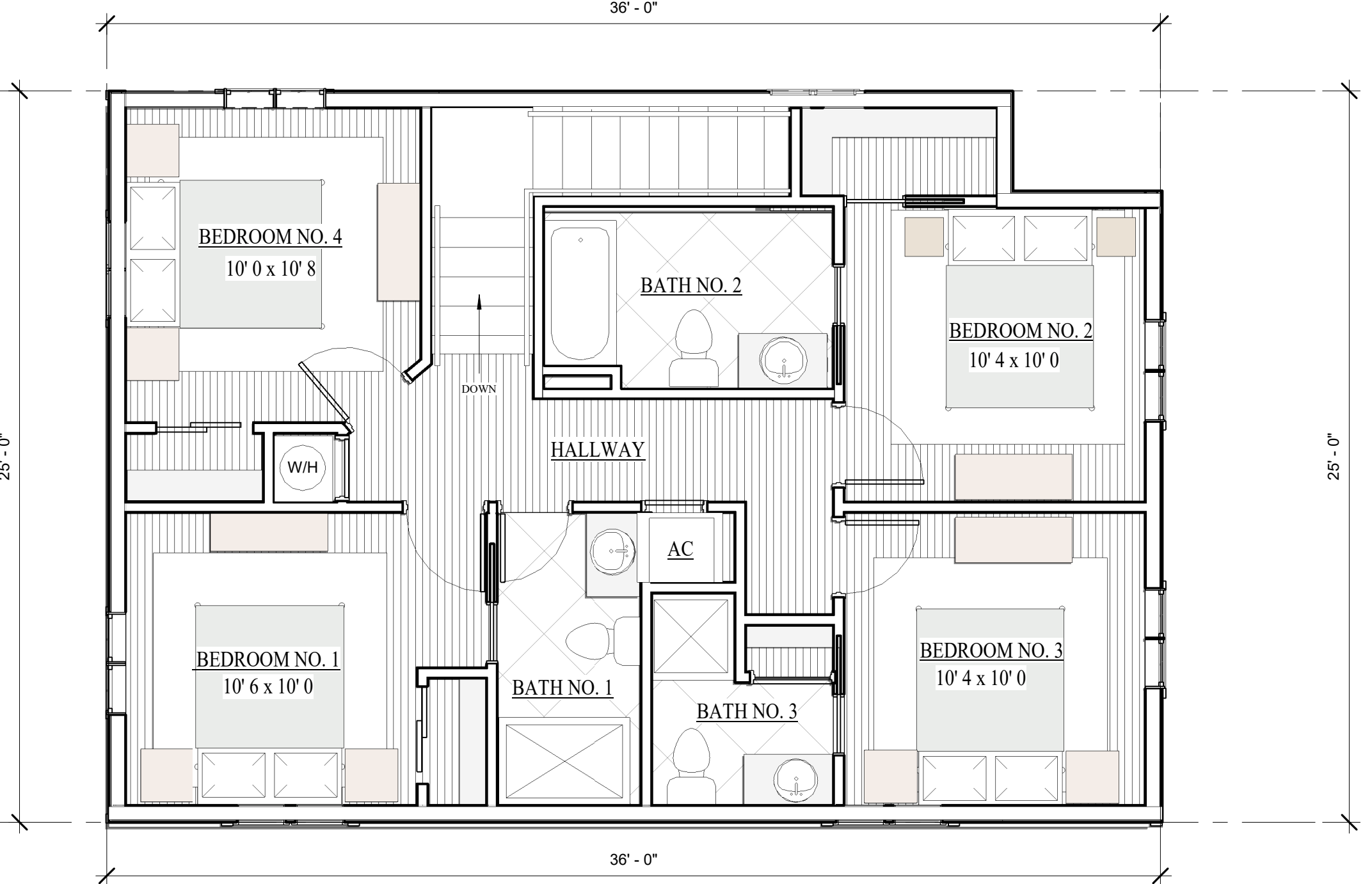
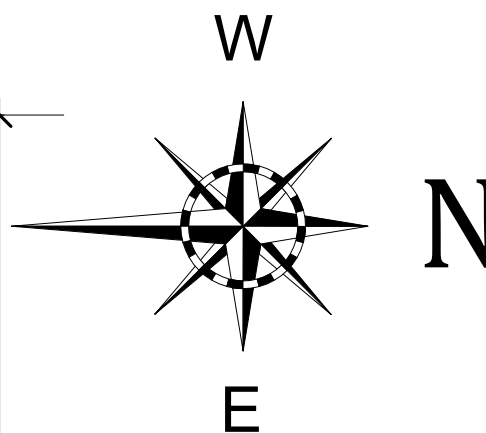
FIRST LEVEL FLOOR PLAN - LOTS 17, 18, & 21



2ND LEVEL FLOOR PLAN - LOTS 17, 18, & 21



PARKING PLAN - LOTS 17, 18, & 21



3RD LEVEL FLOOR PLAN - LOTS 17, 18, & 21



HENRY NORRIS
&
ASSOCIATES

ARCHITECTURE
&
ENVIRONMENTAL
DESIGN

30 N. PALAFOX
PENSACOLA, FL
32502
(850)432-6011
FAX 435-9001

SUMMER COTTAGES
LOTS 17, 18 & 21
Gulf Shores, Alabama

JOB #: Project Number
CAD:
CHECKED: HN
DATE: 02/28/25

REVISIONS:

SEAL:

SHEET TITLE:
LOTS 17, 18 & 21 FLOOR
PLANS

A100



"SUBJECT TO CHANGE"



RE/MAX Paradise

Bob Shallow 251-948-8888

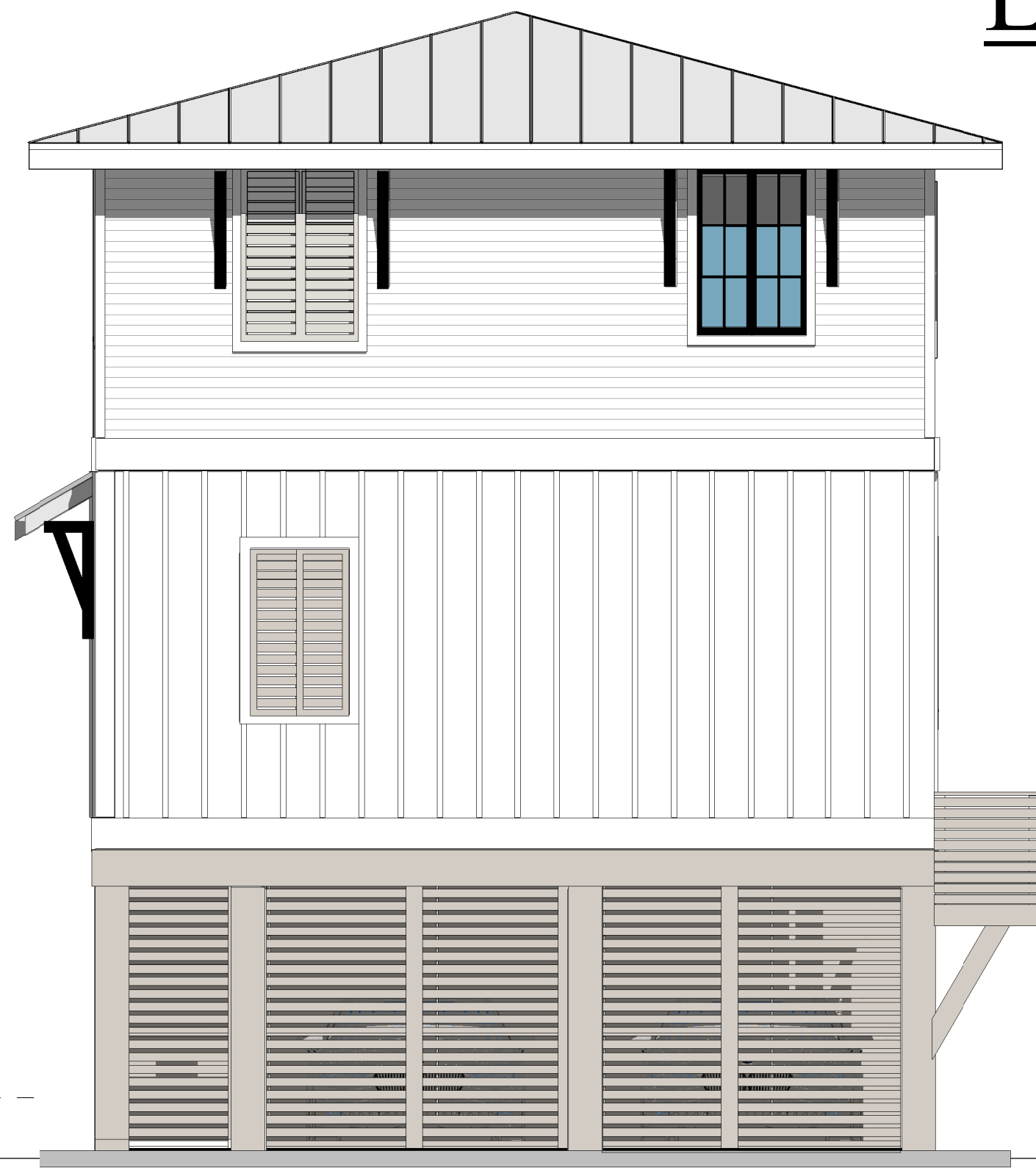




WEST ELEVATION - LOTS 17, 18, & 21



NORTH ELEVATION - LOTS 17, 18, & 21



SOUTH SIDE ELEVATION - LOTS 17, 18, & 21



EAST ELEVATION - LOTS 17, 18, & 21

LOTS 17, 18 & 21

4 BEDROOM/3 1/2 BATH
1725 SF



"SUBJECT TO CHANGE"



RE/MAX Paradise

Bob Shallow 251-948-8888



Cunningham & Head



HENRY NORRIS
&
ASSOCIATES

ARCHITECTURE
&
ENVIRONMENTAL
DESIGN

30 N. PALAFOX
PENSACOLA, FL
32502
(850)432-6011
FAX 435-9001

SUMMER COTTAGES
LOTS 17, 18 & 21
Gulf Shores, Alabama

JOB #: Project Number
CAD:
CHECKED: HN
DATE: 02/28/25

REVISIONS:

SEAL:

SHEET TITLE:
BLDG. ELEVATIONS

A200